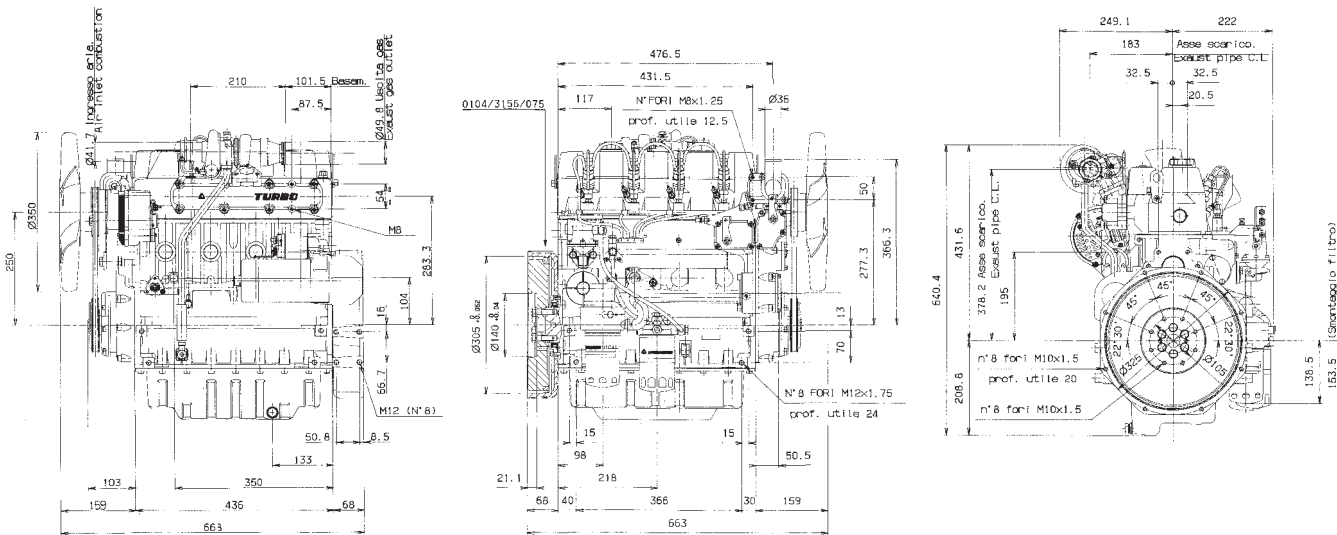


Technical drawings *



* More specific dimensions are available on www.lombardini.it (see table at the bottom of the page)

Standard equipment

- External oil filter
- Intake manifold
- Exhaust manifold
- Intake fun
- Accelerator control
- Electric starter and 12V alternator
- Thermostatic valve
- Fuel feed diaphragm pump
- Water pump
- Flanging plate
- Flywheel with ring gear
- Use - maintenance - spare - parts booklet

Special accessories

- Different guards according to use
- Clutches
- Clutch flywheels
- Flanges
- Hydraulic pump adaptors
- Panel board
- Electric stop
- Electronic plant for plugs
- Alternators
- Radiators
- Blowing fan
- Engine feet
- Fuel tanks
- Mufflers separated
- Dry air-cleaners separated
- Ciclonic precleaners
- Fuel filter on engine
- Cab heating system
- High capacity oil sump

Files for this product available on www.lombardini.it

Data sheet	LDW2204TDS.PDF
Owner manual	LDW2204TOM.PDF
Service manual	LDW2204TSM.PDF
Technical drawing	LDW2204TTD.DWG
Power curve	LDW2204TPC.PDF

- 4 cylinders
- 2199 cm³
- 49.2 kW/66.9 HP
- 3000 rpm
- Nm. 183@1800

Homologation

- EPA TIER 2 ■
- 97/68/CE Step 2 ●
- ECE R24-03 ▲

Technical features

- 4-stroke diesel engine with cylinders in line
- Fluid-cooled with axial fan.
- Indirect injection.
- Single-shaft distribution with rod, valve levers and hydraulic tappets.
- Geared distribution control.
- Water-oil heat exchanger.
- Turbocompressor Mitsubishi TD 025L.
- Double pto on the crankshaft.
- Two pto on the distribution.
- Counterclockwise, rotation.
- Forced lubrication with vane pump on the crankshaft.
- Total passage external oil filter.
- Positionable fan and water pump.
- Automatic extra fuel starting device.
- Centrifugal governor.
- Torque regulator.
- Cast iron engine block with re-borable integral liners.
- Cast iron cylinder head.



Main applications

- Fork lift
- Excavator
- Gen set
- Compressor
- Sweeper
- Tractor



ISO 9001 Cert. n. 0446 - 1405
QS. 9000 Cert. n. 2231/0



Via Cav. del Lavoro Adelmo Lombardini, 2
42100 Reggio Emilia - Italia
Tel. ++39 0522.3891 - Fax ++39 0522.389503
www.lombardini.it

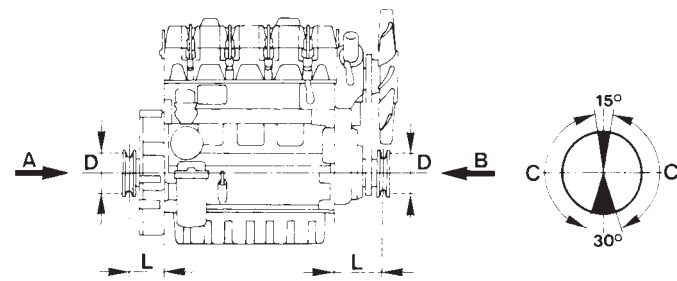
LOMBARDINI RESERVES THE RIGHT TO MAKE MODIFICATIONS WITHOUT PRIOR NOTICE

mod. 51006/2

SERIE CHD Plus

Specifications

Cylinders	N.	4
Displacement	cm ³	2199
Bore	mm	88
Stroke	mm	90.4
Compression ratio		22.8:1
Rating kW/HP	N (80/1269/CEE) ISO 1585	49.2/66.9
	NB ISO 3046 IFN	47.0/63.9
	NA ISO 3046 ICXN	42.3/57.5
Max. torque	Nm.	183@1800
Max. torque 3 P.T.O.	Nm.	39.2@3000
Min. idling speed		900
Water pump delivery at 3000 r.p.m.	l/min.	128
Oil consumption	kg/h.	0.032
Oil sump capacity		
con equilibratore dinamico	l	4.5
senza equilibratore dinamico	l	5.7
Max. allowable tilt for short time operation (peak values)		25° (35°)
Combustion air required at 3000 r.p.m.	l/min.	4200
Cooling air required at 3000 r.p.m.	m ³ /min.	180
Dry weight	kg	197
Recommended battery	V/Ah	12/88
Minimum pulley diameters for belt drive		



V belt $D (mm) \geq 73 [L (mm) + 118] \frac{N (kW)}{n (RPM)}$

Cogged belt $D (mm) \geq 46 [L (mm) + 118] \frac{N (kW)}{n (RPM)}$

Max. allowable axial load in both direction A-B = 300 kg
C - zone in which the radial load acts on the pulley

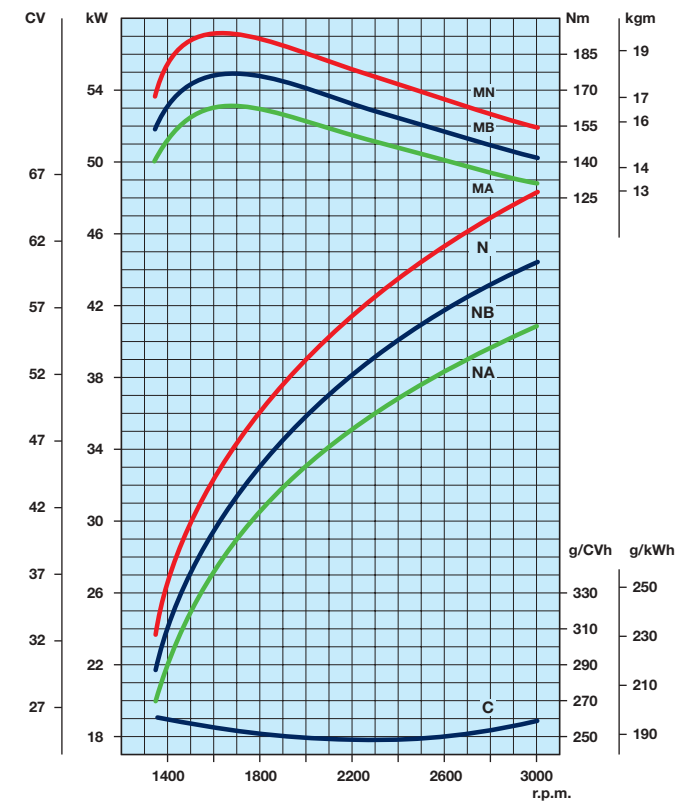
Sound pressure level dB (A)

Sound level polar diagram open field - 7 meters microphone - no load running engine.

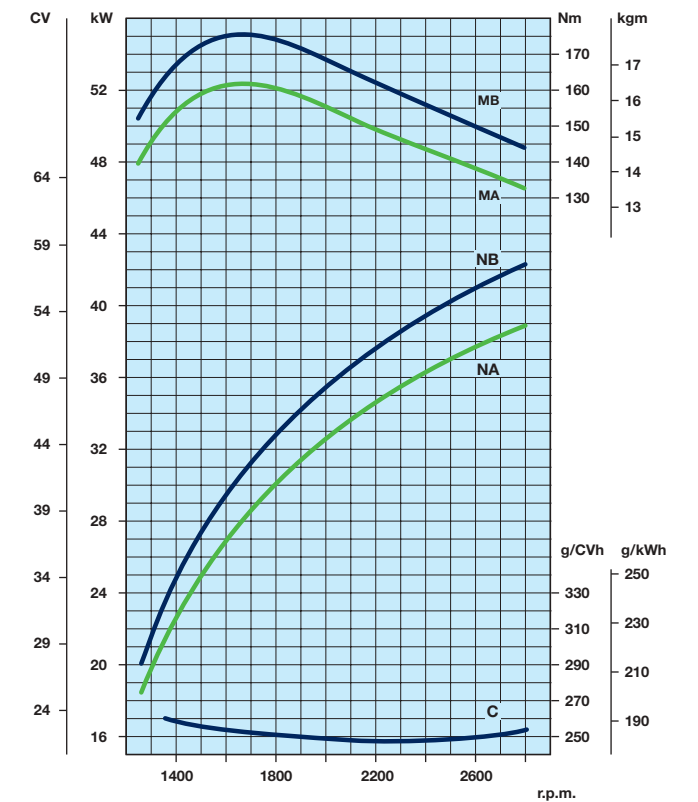
SERIE CHD Plus

Curves

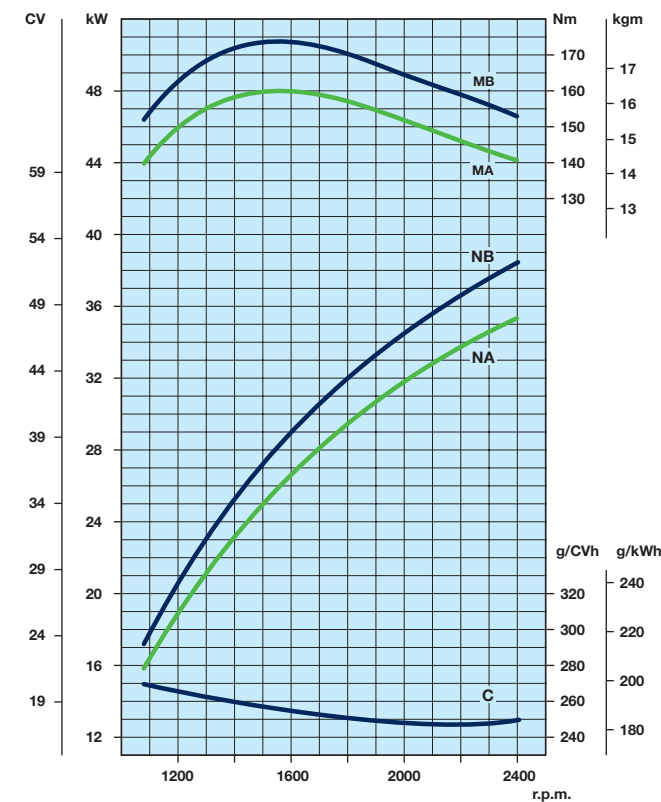
LDW 2204/T @ 3000 r.p.m. ■ ● ▲



LDW 2204/T B1 @ 2800 r.p.m. ■ ● ▲



LDW 2204/T B3 @ 2400 r.p.m. ■ ● ▲



- N Power curve - 80/1269/CEE - ISO 1585 -
- NB Power curve - ISO 3046/1 - IFN -
- NA Power curve - ISO 3046/1 - ICXN -
- MN Torque curve - (N curve)
- MB (B curve - MA (A curve)
- C Specific fuel consumption - (NB curve)

Power for gen set or stationary running

Engine power kW

	Intermittent (NB)	Continuous (NA)
1500 RPM 50 Hz	26	23.6
1800 RPM 60 Hz	31.5	28.6
3000 RPM 50 Hz	44	40